

SNMP Web Box Quick Guide For Off-grid Inverter

V. 1.1

1. Overview

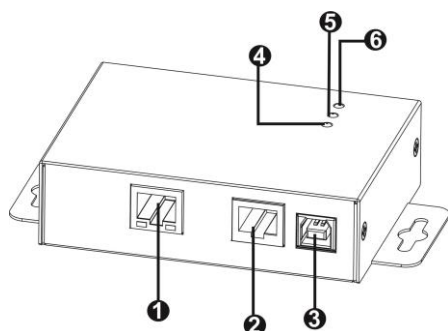


Chart 1-1

- ❶ Ethernet port(10/100Base-T)
- ❷ RS-232 port
- ❸ 5Vdc DC input
- ❹ Data receiving indicator
- ❺ Data transmission indicator
- ❻ Power indicator

Ethernet port status LEDs:

100M LED (Green)	Flash	Port is operating at 100Mbit/s
	Off	Card is not connected to the network
10M LED (Yellow)	Flash	Port is operating at 10Mbit/s
	Off	Card is not connected to the network

2. Connection

Use one Ethernet cable to connect to Ethernet port (❶) of the box. Use one RJ45 cable to connect to RS-232 port (❷) of the box and RS-232 port of the inverter. Then, use bundled USB cable to connect to USB port (❸) of the box and 5V DC USB power source.

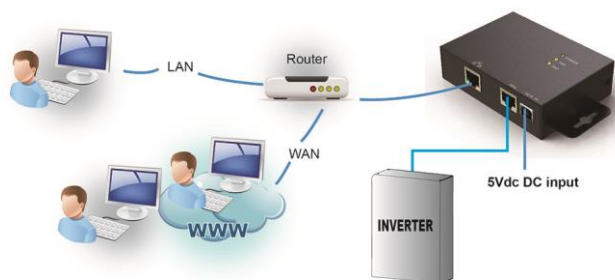


Chart 2-1

3. Configuration

- a) Please install SNMP web manager software in your PC. After software is installed successfully, the Installer will leave a shortcut icon on your desktop.



Chart 3-1

- b) Enter specific IP address to search all SNMP devices in LAN. (The SNMP web manager will automatically collect the IP address from sever by default via a DHCP server. It will apply default IP address of 192.168.102.230, default subnet mask as 255.255.255.0, and default gateway as 0.0.0.0 without a DHCP server.

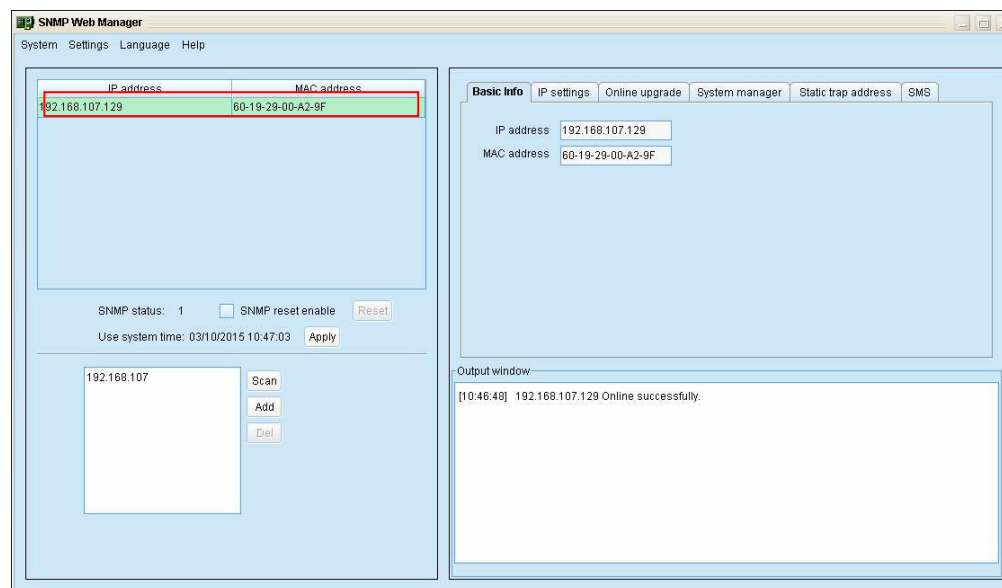
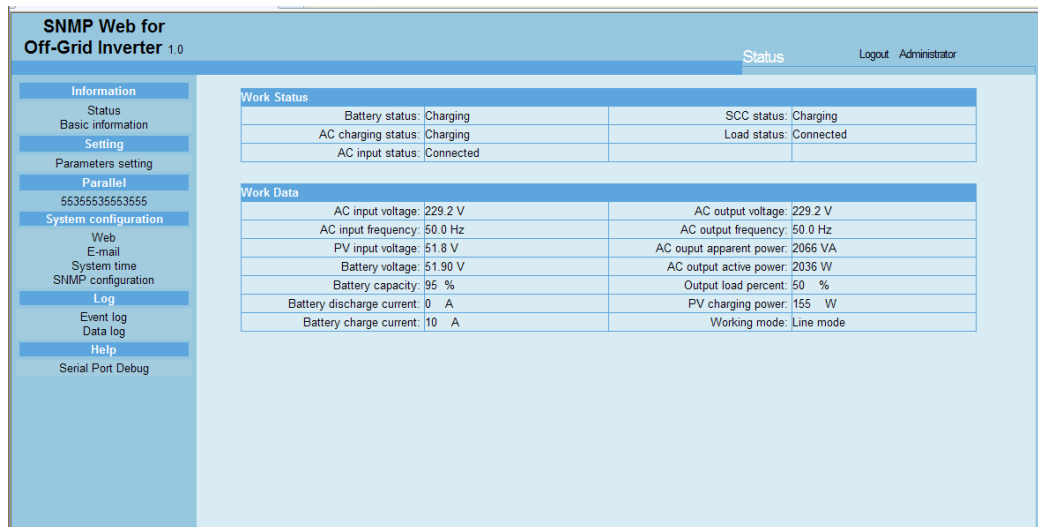


Chart 3-2

- c) User can modify IP setting, online upgrade, password management, and static trap address setting in SNMP Web Manager interface. It is necessary to enter password for any modifications. The default password is 12345678.

4. Monitoring

Double click the selected device from the device list (refer to Chart 3-2) to open web page as Chart 4-1.



The screenshot displays the 'SNMP Web for Off-Grid Inverter 1.0' interface. The top navigation bar includes 'Status' and 'Logout Administrator'. The left sidebar contains a menu with categories: Information, Status, Basic information, Setting, Parameters setting, Parallel, System configuration, Web, E-mail, System time, SNMP configuration, Log, Event log, Data log, Help, and Serial Port Debug.

The main content area is divided into two sections:

- Work Status:** A table showing the current operational state of the inverter.
- Work Data:** A table providing detailed real-time performance metrics.

Battery status:	Charging	SCC status:	Charging
AC charging status:	Charging	Load status:	Connected
AC input status:	Connected		

AC input voltage:	229.2 V	AC output voltage:	229.2 V
AC input frequency:	50.0 Hz	AC output frequency:	50.0 Hz
PV input voltage:	51.8 V	AC output apparent power:	2066 VA
Battery voltage:	51.90 V	AC output active power:	2036 W
Battery capacity:	95 %	Output load percent:	50 %
Battery discharge current:	0 A	PV charging power:	155 W
Battery charge current:	10 A	Working mode:	Line mode

Chart 4-1

For detailed configuration, please check SNMP Web Management User Manual for off-grid inverter.